

55 Series

 55110 Pg. 6.5	 55170 Pg. 6.5	 55210 Pg. 6.5	 55222 Pg. 6.6	 55320 Pg. 6.6	 55340 Pg. 6.6	 55360 Pg. 6.6	 55115 Pg. 6.7	 55106 Pg. 6.7
 55125 Pg. 6.7	 55175 Pg. 6.8	 55215 Pg. 6.8	 55225 Pg. 6.8	 55325 Pg. 6.9	 55345 Pg. 6.9	 55365 Pg. 6.9	 55040 Pg. 6.9	 55050 Pg. 6.10
 55060 Pg. 6.10	 55130 Pg. 6.10	 55140 Pg. 6.10	 55150 Pg. 6.10	 55160 Pg. 6.11	 55180 Pg. 6.11	 55230 Pg. 6.11	 55235 Pg. 6.11	 55237 Pg. 6.12
 55240 Pg. 6.12	 55310 Pg. 6.12	 55315 Pg. 6.12	 55330 Pg. 6.13	 55350 Pg. 6.13	 55500 Pg. 6.13	 55510 Pg. 6.13	 55520 Pg. 6.14	 55620 Pg. 6.14
 55625 Pg. 6.14	 55700 Pg. 6.14	 55705 Pg. 6.14	 50980 Pg. 6.15	 50610 Pg. 6.15	 50615 Pg. 6.15	 55991 Pg. 6.15	 55006 Pg. 6.15	

For STRAIGHT FITTINGS see 50N series

 50000N Pg. 4.5	 50010N Pg. 4.5	 50010N Pg. 4.6	 50020N Pg. 4.7
---	---	---	---

56 Series - Mini

 56010 Pg. 6.16	 56020 Pg. 6.16	 56115 Pg. 6.16	 56215 Pg. 6.16	 56225 Pg. 6.16	 56550 Pg. 6.17	 56040 Pg. 6.17	 56050 Pg. 6.17	 56130 Pg. 6.17
 56230 Pg. 6.17								

NYLON PUSH-TO-CONNECT FITTINGS
FOR METRIC TUBE



55-56 Series

55000
56000



TECHNICAL CHARACTERISTICS



Reference Standard

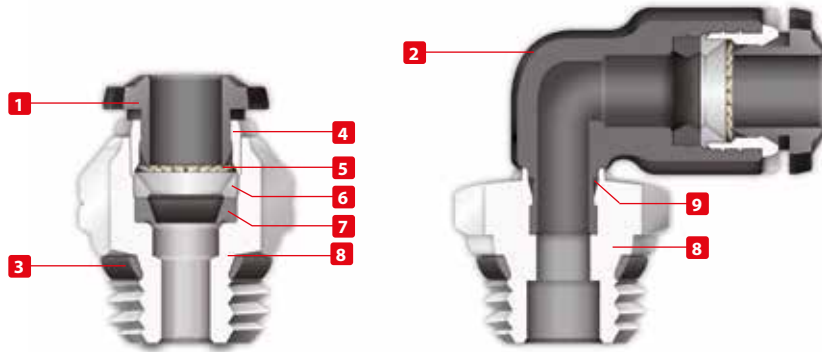
1907/2006
REACH ✓

2011/65/CE
RoHS ✓

PED
2014/68/UE

ISO
14743:2004

SILICON
FREE



Pressure Rating

Vacuum ~ 290 PSI
-0.99 bar ~ 20 bar
-0.099 MPa ~ 2.0 MPa



Temperatures Rating

NBR
-4° F ~ 176° F
-20° C ~ 80° C



Media

- Compressed air
- Vacuum
- Water



Applications

- Pneumatic Automation
- Automotive
- Textile, Packaging
- Compressed Air Circuit
- Vacuum



Advantages

- 1 The 303 Stainless Steel gripper ensures a tight clamp for tubes of any material without damaging the tube's surface. The secure connection between the tube and the fitting will hold up to severe conditions such as impact and vibrations.
- 2 The shape of the safety ring and the molded seal perfectly seal off the tube, creating a vacuum.
- 3 Series with several types of threads:
SWIFFIT
BSPP
- 4 All straight fittings can be tightened with an Allen wrench because of our internal hex design. This enables the end user to tighten the fitting in spaces too small for an openend wrench.



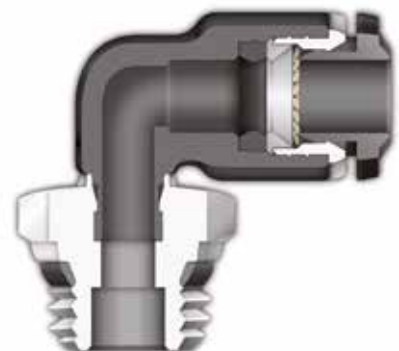
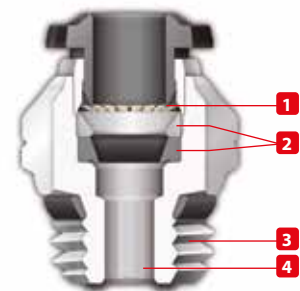
Component Parts and Materials

- 1 Composite Release Collet
- 2 Nylon Body
- 3 NBR Thread Seal
- 4 Nickel Plated Brass Sleeve
- 5 303 Stainless Steel Gripper
- 6 Technopolymer Safety Ring
- 7 NBR Molded Seal
- 8 Nickel Plated Thread Brass Body
- 9 NBR Seal



Tubing Compatibility

Nylon 6 - 11 -12
Polyethylene
Polyurethane ("98 Shore A for best result)
PTFE
FEP

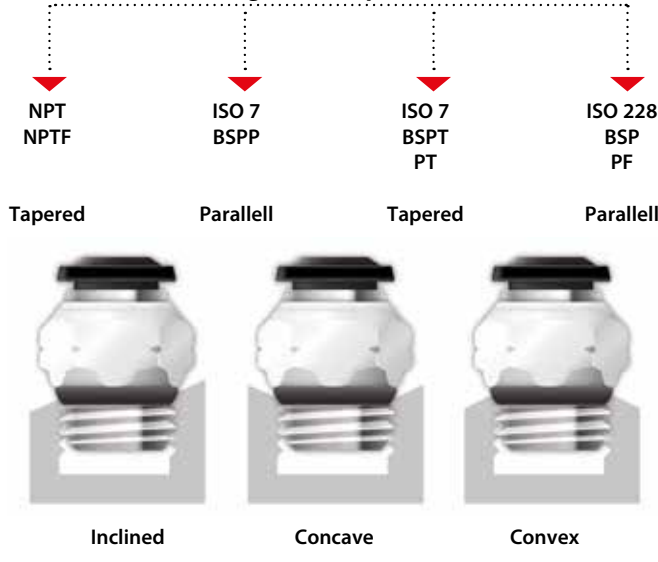




THREADS & ADVANTAGES



One fitting... Endless possibilities



Our **SWIFFFIT** universal fittings also work on non-flat surfaces without compromising an air-tight seal.

The **SWIFFFIT** Universal Thread has been designed to offer the following advantages to the end users:

- Reduced overall length
- Smaller hex dimensions compared to parallel threads
- Fits with various parallel and tapered threads
- All **SWIFFFIT** fittings have been equipped with threads and an NBR thread seal that will universally connect to all thread types.

Torque Specifications

Recommended Torque		
Thread Size	Min.	Max.
1/8	5 Nm	7 Nm
1/4	5 Nm	7 Nm
3/8	5 Nm	7 Nm
1/2	5 Nm	7 Nm



BSPP Threads



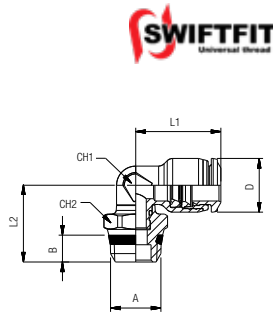
The **BSPP** Thread has been designed to offer the following advantages to the end users:

- Standard ISO 228 and ISO R/262
- Designed for use in BSPP connections with an integrated NBR o-ring that provides a perfect seal
- Completely reusable

Torque Specifications

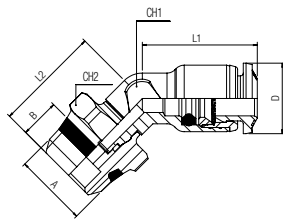
Recommended Torque		
Thread Size	Min.	Breaking Torque
M5	0.8 Nm	3.2 Nm
M7	3 Nm	8 Nm
M8	3 Nm	8 Nm
1/2	3 Nm	8 Nm
1/4	9 Nm	30 Nm
3/8	10 Nm	60 Nm
1/2	12 Nm	50 Nm

55110
SWIVEL ELBOW



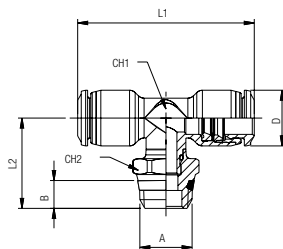
Part No.	Tube	A	B	L1	L2	CH1	CH2	D
55110-4-1/8	5/32 (4)	1/8	.217 (5,5)	.650 (16,5)	.650 (16,5)	.276 (7)	.512 (13)	.394 (10)
55110-4-1/4	5/32 (4)	1/4	.276 (7)	.650 (16,5)	.709 (18)	.276 (7)	.591 (15)	.394 (10)
55110-5-1/8	5	1/8	.217 (5,5)	.787 (20)	.685 (17,4)	.354 (9)	.512 (13)	.472 (12)
55110-6-1/8	6	1/8	.217 (5,5)	.807 (20,5)	.685 (17,4)	.354 (9)	.512 (13)	.472 (12)
55110-6-1/4	6	1/4	.276 (7)	.807 (20,5)	.744 (18,9)	.354 (9)	.591 (15)	.472 (12)
55110-6-3/8	6	3/8	.295 (7,5)	.807 (20,5)	.787 (20)	.354 (9)	.669 (17)	.472 (12)
55110-6-1/2	6	1/2	.354 (9)	.807 (20,5)	.866 (22)	.354 (9)	.827 (21)	.472 (12)
55110-8-1/8	5/16 (8)	1/8	.217 (5,5)	.866 (22)	.728 (18,5)	.394 (10)	.512 (13)	.551 (14)
55110-8-1/4	5/16 (8)	1/4	.276 (7)	.866 (22)	.787 (20)	.394 (10)	.591 (15)	.551 (14)
55110-8-3/8	5/16 (8)	3/8	.295 (7,5)	.866 (22)	.807 (20,5)	.394 (10)	.669 (17)	.551 (14)
55110-8-1/2	5/16 (8)	1/2	.354 (9)	.866 (22)	.906 (23)	.394 (10)	.827 (21)	.551 (14)
55110-10-1/4	10	1/4	.276 (7)	1043 (26,5)	.858 (21,8)	.512 (13)	.630 (16)	.669 (17)
55110-10-3/8	10	3/8	.295 (7,5)	1043 (26,5)	.858 (21,8)	.512 (13)	.669 (17)	.669 (17)
55110-10-1/2	10	1/2	.354 (9)	1043 (26,5)	.957 (24,3)	.512 (13)	.827 (21)	.669 (17)
55110-12-1/4	12	1/4	.276 (7)	1181 (30)	.909 (23,1)	.630 (16)	.630 (16)	.787 (20)
55110-12-3/8	12	3/8	.295 (7,5)	1181 (30)	.909 (23,1)	.630 (16)	.669 (17)	.787 (20)
55110-12-1/2	12	1/2	.354 (9)	1181 (30)	1008 (25,6)	.630 (16)	.827 (21)	.787 (20)
55110-14-3/8	14	3/8	.295 (7,5)	1220 (31)	1043 (26,5)	.709 (18)	.787 (20)	.827 (21)
55110-14-1/2	14	1/2	.354 (9)	1220 (31)	1063 (27)	.709 (18)	.827 (21)	.827 (21)
55110-16-3/8	16	3/8	.295 (7,5)	1291 (32,8)	1330 (33,8)	.787 (20)	.866 (22)	.949 (24,1)
55110-16-1/2	16	1/2	.354 (9)	1291 (32,8)	1370 (34,8)	.787 (20)	.866 (22)	.949 (24,1)

55170
45° SWIVEL ELBOW



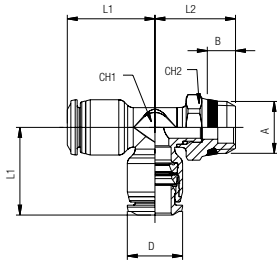
Part No.	Tube	A	B	L1	L2	CH1	CH2	D
55170-4-1/8	5/32 (4)	1/8	.217 (5,5)	.492 (12,5)	.650 (16,5)	.276 (7)	.512 (13)	.394 (10)
55170-6-1/8	6	1/8	.217 (5,5)	.807 (20,5)	.689 (17,5)	.354 (9)	.512 (13)	.472 (12)
55170-6-1/4	6	1/4	.276 (7)	.807 (20,5)	.744 (18,9)	.354 (9)	.591 (15)	.472 (12)
55170-8-1/8	5/16 (8)	1/8	.217 (5,5)	.866 (22)	.728 (18,5)	.394 (10)	.512 (13)	.551 (14)
55170-8-1/4	5/16 (8)	1/4	.276 (7)	.866 (22)	.787 (20)	.394 (10)	.591 (15)	.551 (14)
55170-8-3/8	5/16 (8)	3/8	.295 (7,5)	.866 (22)	.807 (20,5)	.394 (10)	.669 (17)	.551 (14)
55170-10-1/4	10	1/4	.276 (7)	1043 (26,5)	.858 (21,8)	.512 (13)	.630 (16)	.669 (17)
55170-10-3/8	10	3/8	.295 (7,5)	1043 (26,5)	.957 (24,3)	.512 (13)	.669 (17)	.669 (17)
55170-10-1/2	10	1/2	.354 (9)	1043 (26,5)	.909 (23,1)	.512 (13)	.827 (21)	.669 (17)
55170-12-1/4	12	1/4	.276 (7)	1181 (30)	.909 (23,1)	.630 (16)	.630 (16)	.787 (20)
55170-12-3/8	12	3/8	.295 (7,5)	1181 (30)	1008 (25,6)	.630 (16)	.669 (17)	.787 (20)
55170-12-1/2	12	1/2	.354 (9)	1181 (30)	.858 (21,8)	.630 (16)	.827 (21)	.787 (20)

55210
SWIVEL BRANCH TEE



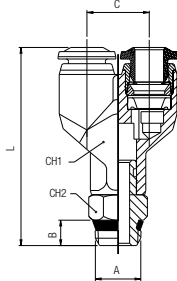
Part No.	Tube	A	B	L1	L2	CH1	CH2	D
55210-4-1/8	5/32 (4)	1/8	.217 (5,5)	1.299 (33)	.736 (18,7)	.276 (7)	.512 (13)	.394 (10)
55210-4-1/4	5/32 (4)	1/4	.276 (7)	1.299 (33)	.795 (20,2)	.276 (7)	.591 (15)	.394 (10)
55210-5-1/8	5	1/8	.217 (5,5)	1.575 (40)	.787 (20)	.354 (9)	.512 (13)	.472 (12)
55210-6-1/8	6	1/8	.217 (5,5)	1.614 (41)	.787 (20)	.354 (9)	.512 (13)	.492 (12,5)
55210-6-1/4	6	1/4	.276 (7)	1.614 (41)	.846 (21,5)	.354 (9)	.591 (15)	.492 (12,5)
55210-8-1/8	5/32 (8)	1/8	.217 (5,5)	1.732 (44)	.835 (21,2)	.394 (10)	.512 (13)	.551 (14)
55210-8-1/4	5/32 (8)	1/4	.276 (7)	1.732 (44)	.894 (22,7)	.394 (10)	.591 (15)	.551 (14)
55210-8-3/8	5/32 (8)	3/8	.295 (7,5)	1.732 (44)	.913 (23,2)	.394 (10)	.669 (17)	.551 (14)
55210-10-1/4	10	1/4	.276 (7)	2.087 (53)	1.012 (25,7)	.512 (13)	.630 (16)	.669 (17)
55210-10-3/8	10	3/8	.295 (7,5)	2.087 (53)	1.012 (25,7)	.512 (13)	.669 (17)	.669 (17)
55210-10-1/2	10	1/2	.354 (9)	2.087 (53)	1.11 (28,2)	.512 (13)	.827 (21)	.669 (17)
55210-12-1/4	12	1/4	.276 (7)	2.362 (60)	1.067 (27,1)	.630 (16)	.630 (16)	.787 (20)
55210-12-3/8	12	3/8	.295 (7,5)	2.362 (60)	1.067 (27,1)	.630 (16)	.669 (17)	.787 (20)
55210-12-1/2	12	1/2	.354 (9)	2.362 (60)	1.165 (29,6)	.630 (16)	.827 (21)	.787 (20)
55210-14-3/8	14	3/8	.295 (7,5)	2.402 (61)	1.189 (30,2)	.709 (18)	.787 (20)	.827 (21)
55210-14-1/2	14	1/2	.354 (9)	2.402 (61)	1.209 (30,7)	.709 (18)	.827 (21)	.827 (21)
55210-16-3/8	16	3/8	.295 (7,5)	2.578 (65,5)	1.201 (30,5)	.787 (20)	.866 (22)	.948 (24)
55210-16-1/2	16	1/2	.354 (9)	2.578 (65,5)	1.201 (30,5)	.787 (20)	.984 (25)	.948 (24)

55222
SWIVEL RUN TEE



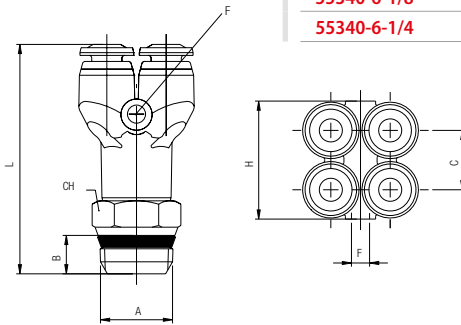
Part No.	Tube	A	B	L1	L2	CH1	CH2	D
55222-4-1/8	5/32 (4)	1/8	.217 (5,5)	.650 (16,5)	.717 (18,2)	.276 (7)	.512 (13)	.394 (10)
55222-4-1/4	5/32 (4)	1/4	.276 (7)	.650 (16,5)	.776 (19,7)	.276 (7)	.591 (15)	.394 (10)
55222-5-1/8	5	1/8	.217 (5,5)	.787 (20)	.685 (17,4)	.354 (9)	.512 (13)	.472 (12)
55222-6-1/8	6	1/8	.217 (5,5)	.807 (20,5)	.685 (17,4)	.354 (9)	.512 (13)	.492 (12,5)
55222-6-1/4	6	1/4	.276 (7)	.807 (20,5)	.744 (18,9)	.354 (9)	.591 (15)	.492 (12,5)
55222-8-1/8	5/16 (8)	1/8	.217 (5,5)	.866 (22)	.744 (18,9)	.394 (10)	.512 (13)	.551 (14)
55222-8-1/4	5/16 (8)	1/4	.276 (7)	.866 (22)	.803 (20,4)	.394 (10)	.591 (15)	.551 (14)
55222-8-3/8	5/16 (8)	3/8	.295 (7,5)	.866 (22)	.823 (20,9)	.394 (10)	.669 (17)	.551 (14)
55222-10-1/4	10	1/4	.276 (7)	1.043 (26,5)	.858 (21,8)	.512 (13)	.630 (16)	.669 (17)
55222-10-3/8	10	3/8	.295 (7,5)	1.043 (26,5)	.858 (21,8)	.512 (13)	.669 (17)	.669 (17)
55222-10-1/2	10	1/2	.354 (9)	1.043 (26,5)	.957 (24,3)	.512 (13)	.827 (21)	.669 (17)
55222-12-1/4	12	1/4	.276 (7)	1.220 (31)	.909 (23,1)	.630 (16)	.630 (16)	.787 (20)
55222-12-3/8	12	3/8	.295 (7,5)	1.220 (31)	.909 (23,1)	.630 (16)	.669 (17)	.787 (20)
55222-12-1/2	12	1/2	.354 (9)	1.220 (31)	1.008 (25,6)	.630 (16)	.827 (21)	.787 (20)
55222-14-3/8	14	3/8	.295 (7,5)	1.201 (30,5)	1.043 (26,5)	.709 (18)	.787 (20)	.827 (21)
55222-14-1/2	14	1/2	.354 (9)	1.201 (30,5)	1.063 (27)	.709 (18)	.827 (21)	.827 (21)

55320
UNION Y



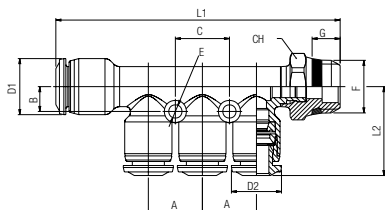
Part No.	Tube	A	B	C	L	CH1	CH2
55320-4-1/8	5/32 (4)	1/8	.217 (5,5)	.433 (11)	1.496 (38)	.394 (10)	.433 (11)
55320-4-1/4	5/32 (4)	1/4	.276 (7)	.433 (11)	1.594 (40,5)	.394 (10)	.551 (14)
55320-6-1/8	6	1/8	.217 (5,5)	.531 (13,5)	1.693 (43)	.472 (12)	.433 (11)
55320-6-1/4	6	1/4	.276 (7)	.531 (13,5)	1.791 (45,5)	.472 (12)	.551 (14)
55320-8-1/8	5/16 (8)	1/8	.217 (5,5)	.610 (15,5)	1.831 (46,5)	.551 (14)	.433 (11)
55320-8-1/4	5/16 (8)	1/4	.276 (7)	.610 (15,5)	1.929 (49)	.551 (14)	.551 (14)
55320-8-3/8	5/16 (8)	3/8	.295 (7,5)	.610 (15,5)	1.949 (49,5)	.551 (14)	.669 (17)
55320-10-1/4	10	1/4	.276 (7)	.748 (19)	2.224 (56,5)	.669 (17)	.551 (14)
55320-10-3/8	10	3/8	.295 (7,5)	.748 (19)	2.264 (57,5)	.669 (17)	.669 (17)
55320-10-1/2	10	1/2	.354 (9)	.748 (19)	2.362 (60)	.669 (17)	.827 (21)
55320-12-3/8	12	3/8	.295 (7,5)	.866 (22)	2.618 (66,5)	.787 (20)	.669 (17)
55320-12-1/2	12	1/2	.354 (9)	.866 (22)	2.677 (68)	.787 (20)	.827 (21)

55340
4 POSITION Y



Part No.	Tube	A	B	C	L	H	CH	F
55340-4-1/8	5/32 (4)	1/8	.217 (5,5)	.425 (10,8)	1.555 (39,5)	.846 (21,5)	.433 (11)	.130 (3,3)
55340-4-1/4	5/32 (4)	1/4	.276 (7)	.425 (10,8)	1.654 (42)	.846 (21,5)	.551 (14)	.130 (3,3)
55340-6-1/8	6	1/8	.217 (5,5)	.524 (13,3)	1.831 (46,5)	1.055 (26,8)	.433 (11)	.130 (3,3)
55340-6-1/4	6	1/4	.276 (7)	.524 (13,3)	1.890 (48)	1.055 (26,8)	.551 (14)	.130 (3,3)

55360
REDUCTION MANIFOLD

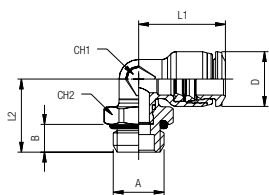


Part No.	Tube	F	A	B	L1	L2	C	E	G	H	D1	D2
55360-6-4-1/8	6-5/32(4)	1/8	.531 (13,5)	.236 (6)	2.756 (70)	.858 (21,8)	.531 (13,5)	.130 (3,3)	.217 (5,5)	.512 (13)	.551 (14)	.472 (12)
55360-6-4-1/4	6-5/32(4)	1/4	.531 (13,5)	.236 (6)	2.811 (71,4)	.858 (21,8)	.531 (13,5)	.130 (3,3)	.276 (7)	.591 (15)	.551 (14)	.472 (12)
55360-8-4-1/8	5/16(8)-5/32(4)	1/8	.531 (13,5)	.236 (6)	2.756 (70)	.858 (21,8)	.531 (13,5)	.130 (3,3)	.217 (5,5)	.512 (13)	.551 (14)	.472 (12)
55360-8-4-1/4	5/16(8)-5/32(4)	1/4	.531 (13,5)	.236 (6)	2.811 (71,4)	.858 (21,8)	.531 (13,5)	.130 (3,3)	.276 (7)	.591 (15)	.551 (14)	.472 (12)
55360-8-6-1/8	5/16(8)-6	1/8	.531 (13,5)	.236 (6)	2.756 (70)	.878 (22,3)	.531 (13,5)	.130 (3,3)	.217 (5,5)	.512 (13)	.551 (14)	.492 (12,5)
55360-8-6-1/4	5/16(8)-6	1/4	.531 (13,5)	.236 (6)	2.811 (71,4)	.878 (22,3)	.531 (13,5)	.130 (3,3)	.276 (7)	.591 (15)	.551 (14)	.492 (12,5)
55360-10-6-1/4	10-6	1/4	.591 (15)	.276 (7)	3.209 (81,5)	.933 (23,7)	.591 (15)	.130 (3,3)	.276 (7)	.630 (16)	.669 (17)	.551 (14)
55360-10-6-3/8	10-6	3/8	.591 (15)	.276 (7)	3.209 (81,5)	.933 (23,7)	.591 (15)	.130 (3,3)	.295 (7,5)	.669 (17)	.669 (17)	.551 (14)
55360-10-8-1/4	10-5/16(8)	1/4	.591 (15)	.276 (7)	3.209 (81,5)	.913 (23,2)	.591 (15)	.130 (3,3)	.276 (7)	.630 (16)	.669 (17)	.551 (14)
55360-10-8-3/8	10-5/16(8)	3/8	.591 (15)	.276 (7)	3.209 (81,5)	.913 (23,2)	.591 (15)	.130 (3,3)	.295 (7,5)	.669 (17)	.669 (17)	.551 (14)

55115

SWIVEL ELBOW

BSPP

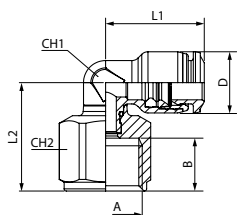


Part No.	Tube	A	B	L1	L2	CH1	CH2	D
55115-4-M5	5/32 (4)	M5	.142 (3,6)	.650 (16,5)	.543 (13,8)	.276 (7)	.354 (9)	.394 (10)
55115-4-M7X1	5/32 (4)	M7X1	.189 (4,8)	.650 (16,5)	.567 (14,4)	.276 (7)	.354 (9)	.394 (10)
55115-4-1/8	5/32 (4)	1/8	.213 (5,4)	.650 (16,5)	.591 (15)	.276 (7)	.512 (13)	.394 (10)
55115-4-1/4	5/32 (4)	1/4	.280 (7,1)	.650 (16,5)	.654 (16,6)	.354 (9)	.630 (16)	.394 (10)
55115-4-3/8	5/32 (4)	3/8	.216 (5,5)	.650 (16,5)	.709 (18)	.276 (7)	.787 (20)	.394 (10)
55115-5-M5	5	M5	.142 (3,6)	.787 (20)	.579 (14,7)	.354 (9)	.354 (9)	.472 (12)
55115-5-1/8	5	1/8	.213 (5,4)	.787 (20)	.622 (15,8)	.354 (9)	.512 (13)	.472 (12)
55115-6-M5	6	M5	.142 (3,6)	.807 (20,5)	.579 (14,7)	.354 (9)	.354 (9)	.472 (12)
55115-6-M7	6	M7	.196 (5)	.807 (20,5)	.610 (15,5)	.354 (9)	.354 (9)	.492 (12,5)
55115-6-M10x1	6	M10x1	.216 (5,5)	.807 (20,5)	.610 (15,5)	.354 (9)	.512 (13)	.492 (12,5)
55115-6-M12x1	6	M12x1	.276 (7)	.807 (20,5)	.689 (18)	.354 (9)	.630 (16)	.492 (12,5)
55115-6-1/8	6	1/8	.213 (5,4)	.807 (20,5)	.622 (15,8)	.354 (9)	.512 (13)	.472 (12)
55115-6-1/4	6	1/4	.280 (7,1)	.807 (20,5)	.689 (17,5)	.354 (9)	.630 (16)	.472 (12)
55115-6-3/8	6	3/8	.319 (8,1)	.807 (20,5)	.748 (19)	.354 (9)	.787 (20)	.472 (12)
55115-6-1/2	6	1/2	.378 (9,6)	.807 (20,5)	.827 (21)	.354 (9)	.984 (25)	.472 (12)
55115-8-M10x1	8	M10x1	.216 (5,5)	.886 (22,5)	.768 (19,5)	.394 (10)	.512 (13)	.551 (14)
55115--M12x1	8	M12x1	.296 (7,5)	.886 (22,5)	.748 (19)	.394 (10)	.630 (16)	.551 (14)
55115-8-1/8	5/16 (8)	1/8	.213 (5,4)	.866 (22)	.764 (19,4)	.394 (10)	.512 (13)	.551 (14)
55115-8-1/4	5/16 (8)	1/4	.280 (7,1)	.866 (22)	.736 (18,7)	.394 (10)	.630 (16)	.551 (14)
55115-8-3/8	5/16 (8)	3/8	.319 (8,1)	.866 (22)	.791 (20,1)	.394 (10)	.787 (20)	.551 (14)
55115-8-1/2	5/16 (8)	1/2	.378 (9,6)	.866 (22)	.870 (22,1)	.394 (10)	.984 (25)	.551 (14)
55115-10-1/8	10	1/8	.216 (5,5)	1.043 (26,5)	.827 (21)	.512 (13)	.630 (16)	.669 (17)
55115-10-1/4	10	1/4	.280 (7,1)	1.043 (26,5)	.898 (22,8)	.512 (13)	.630 (16)	.669 (17)
55115-10-3/8	10	3/8	.319 (8,1)	1.043 (26,5)	.878 (22,3)	.512 (13)	.787 (20)	.669 (17)
55115-10-1/2	10	1/2	.378 (9,6)	1.043 (26,5)	.937 (23,8)	.512 (13)	.984 (25)	.669 (17)
55115-12-1/4	12	1/4	.280 (7,1)	1.181 (30)	.949 (24,1)	.630 (16)	.630 (16)	.787 (20)
55115-12-3/8	12	3/8	.319 (8,1)	1.181 (30)	.929 (23,6)	.630 (16)	.787 (20)	.787 (20)
55115-12-1/2	12	1/2	.378 (9,6)	1.181 (30)	.988 (25,1)	.630 (16)	.984 (25)	.787 (20)
55115-14-3/8	14	3/8	.319 (8,1)	1.220 (31)	1.106 (28,1)	.709 (18)	.787 (20)	.827 (21)
55115-14-1/2	14	1/2	.378 (9,6)	1.220 (31)	1.028 (26,1)	.709 (18)	.984 (25)	.827 (21)
55115-16-3/8	16	3/8	.319 (8,1)	1.291 (32,8)	1.330 (33,8)	.787 (20)	.869 (22)	.948 (24)
55115-16-1/2	16	1/2	.378 (9,6)	1.291 (32,8)	1.420 (35,8)	.787 (20)	.984 (25)	.948 (24)

55106

ORIENTING ELBOW FEMALE ADAPTOR

BSPP

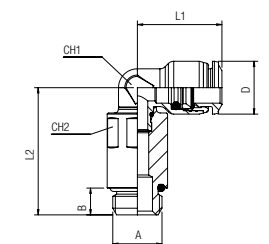


Part No.	Tube	A	B	L1	L2	CH1	CH2	D
55106-4-1/8	5/32 (4)	1/8	.335 (8,5)	.650 (16,5)	.748 (19)	.276 (7)	.492 (12,5)	.394 (10)
55106-4-1/4	5/32 (4)	1/4	.433 (11)	.650 (16,5)	.886 (22,5)	.276 (7)	.630 (16)	.394 (10)
55106-6-1/8	6	1/8	.335 (8,5)	.807 (20,5)	.787 (20)	.354 (9)	.512 (13)	.492 (12,5)
55106-6-1/4	6	1/4	.433 (11)	.807 (20,5)	.925 (23,5)	.354 (9)	.630 (16)	.492 (12,5)
55106-8-1/8	5/16 (8)	1/8	.335 (8,5)	.886 (22,5)	.827 (21)	.394 (10)	.512 (13)	.552 (14)
55106-8-1/4	5/16 (8)	1/4	.433 (11)	.886 (22,5)	.925 (23,5)	.394 (10)	.630 (16)	.552 (14)
55106-8-3/8	5/16 (8)	3/8	.472 (12)	.886 (22,5)	.965 (24,5)	.394 (10)	.748 (19)	.552 (14)
55106-10-1/4	10	1/4	.433 (11)	1.043 (26,5)	1.063 (27)	.512 (13)	.630 (16)	.669 (17)
55106-10-3/8	10	3/8	.472 (12)	1.043 (26,5)	1.063 (27)	.512 (13)	.748 (19)	.669 (17)

55125

EXTENDED SWIVEL ELBOW

BSPP

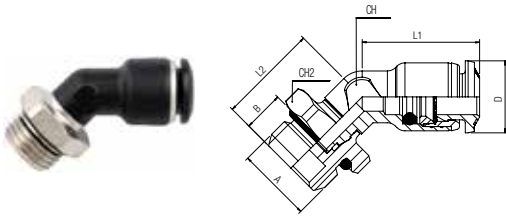


Part No.	Tube	A	B	L1	L2	CH1	CH2	D
55125-4-M5	5/32 (4)	M5	.142 (3,6)	.650 (16,5)	1.083 (27,5)	.276 (7)	.315 (8)	.394 (10)
55125-4-1/8	5/32 (4)	1/8	.213 (5,4)	.650 (16,5)	1.122 (28,5)	.276 (7)	.472 (12)	.394 (10)
55125-6-M5	6	M5	.142 (3,6)	.807 (20,5)	1.161 (29,5)	.354 (9)	.315 (8)	.492 (12,5)
55126-6-M7x1	6	M7x1	.189 (4,8)	.807 (20,5)	1.220 (31)	.354 (9)	.472 (12)	.492 (12,5)
55125-6-1/8	6	1/8	.213 (5,4)	.807 (20,5)	1.161 (29,5)	.354 (9)	.472 (12)	.492 (12,5)
55126-6-1/4	6	1/4	.276 (7)	.807 (20,5)	1.161 (29,5)	.354 (9)	.591 (15)	.492 (12,5)
55125-8-1/8	5/16 (8)	1/8	.213 (5,4)	.886 (22,5)	1.358 (34,5)	.394 (10)	.472 (12)	.551 (14)
55125-8-1/4	5/16 (8)	1/4	.280 (7,1)	.886 (22,5)	1.319 (33,5)	.394 (10)	.591 (15)	.551 (14)
55125-8-3/8	5/16 (8)	3/8	.312 (8,1)	.886 (22,5)	1.358 (34,5)	.393 (10)	.472 (12)	.551 (14)
55125-10-1/4	10	1/4	.279 (7,1)	1.043 (26,5)	1.693 (43)	.512 (13)	.590 (15)	.669 (17)
55125-10-3/8	10	3/8	.312 (8,1)	1.043 (26,5)	1.693 (43)	.512 (13)	.590 (15)	.669 (17)
55125-10-1/2	10	1/2	.378 (9,6)	1.043 (26,5)	1.771 (45)	.512 (13)	.590 (15)	.669 (17)
55125-12-1/4	12	1/4	.279 (7,1)	1.220 (31)	1.771 (45)	.630 (16)	.590 (15)	.787 (20)
55125-12-3/8	12	3/8	.312 (8,1)	1.200 (30,5)	1.752 (44,5)	.630 (16)	.590 (15)	.787 (20)
55125-12-1/2	12	1/2	.378 (9,6)	1.220 (31)	1.811 (46)	.630 (16)	.590 (15)	.787 (20)

55175

45° SWIVEL ELBOW

BSPP

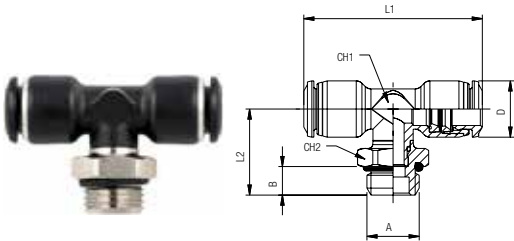


Part No.	Tube	A	B	L1	L2	CH1	CH2	D
55175-4-M5	5/32 (4)	M5	.142 (3,6)	.492 (12,5)	.543 (13,8)	.276 (7)	.354 (9)	.394 (10)
55175-4-1/8	5/32 (4)	1/8	.213 (5,4)	.492 (12,5)	.591 (15)	.276 (7)	.512 (13)	.394 (10)
55175-6-M5	6	M5	.142 (3,6)	.807 (20,5)	.579 (14,7)	.354 (9)	.354 (9)	.472 (12)
55175-6-1/8	6	1/8	.213 (5,4)	.807 (20,5)	.622 (15,8)	.354 (9)	.512 (13)	.472 (12)
55175-6-1/4	6	1/4	.280 (7,1)	.807 (20,5)	.689 (17,5)	.354 (9)	.630 (16)	.472 (12)
55175-8-1/8	5/16 (8)	1/8	.213 (5,4)	.866 (22)	.764 (19,4)	.394 (10)	.512 (13)	.551 (14)
55175-8-1/4	5/16 (8)	1/4	.280 (7,1)	.866 (22)	.736 (18,7)	.394 (10)	.630 (16)	.551 (14)
55175-8-3/8	5/16 (8)	3/8	.319 (8,1)	.866 (22)	.791 (20,1)	.394 (10)	.787 (20)	.551 (14)
55175-10-1/4	10	1/4	.280 (7,1)	1.043 (26,5)	.898 (22,8)	.512 (13)	.630 (16)	.669 (17)
55175-10-3/8	10	3/8	.319 (8,1)	1.043 (26,5)	.878 (22,3)	.512 (13)	.787 (20)	.669 (17)
55175-10-1/2	10	1/2	.378 (9,6)	1.043 (26,5)	.937 (23,8)	.512 (13)	.984 (25)	.669 (17)
55175-12-1/4	12	1/4	.280 (7,1)	1.181 (30)	.949 (24,1)	.630 (16)	.630 (16)	.787 (20)
55175-12-3/8	12	3/8	.319 (8,1)	1.181 (30)	.929 (23,6)	.630 (16)	.787 (20)	.787 (20)
55175-12-1/2	12	1/2	.378 (9,6)	1.181 (30)	.988 (25,1)	.630 (16)	.984 (25)	.787 (20)

55215

SWIVEL BRANCH TEE

BSPP

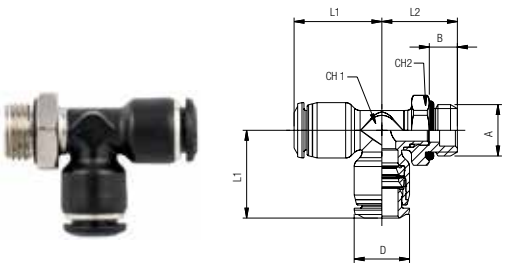


Part No.	Tube	A	B	L1	L2	CH1	CH2	D
55215-4-M5	5/32 (4)	M5	.142 (3,6)	1.299 (33)	.610 (15,5)	.276 (7)	.354 (9)	.394 (10)
55215-4-1/8	5/32 (4)	1/8	.213 (5,4)	1.299 (33)	.673 (17,1)	.276 (7)	.512 (13)	.394 (10)
55215-4-1/4	5/32 (4)	1/4	.280 (7,1)	1.299 (33)	.740 (18,8)	.276 (7)	.630 (16)	.394 (10)
55215-5-M5	5	M5	.142 (3,6)	1.575 (40)	.579 (14,7)	.354 (9)	.354 (9)	.472 (12)
55215-5-1/8	5	1/8	.213 (5,4)	1.575 (40)	.724 (18,4)	.354 (9)	.512 (13)	.472 (12)
55215-6-M5	6	M5	.142 (3,6)	1.614 (41)	.579 (14,7)	.354 (9)	.354 (9)	.492 (12,5)
55215-6-1/8	6	1/8	.213 (5,4)	1.614 (41)	.724 (18,4)	.354 (9)	.512 (13)	.492 (12,5)
55215-6-1/4	6	1/4	.280 (7,1)	1.614 (41)	.787 (20)	.354 (9)	.630 (16)	.492 (12,5)
55215-8-1/8	5/16 (8)	1/8	.213 (5,4)	1.732 (44)	.870 (22,1)	.394 (10)	.512 (13)	.551 (14)
55215-8-1/4	5/16 (8)	1/4	.280 (7,1)	1.732 (44)	.843 (21,4)	.394 (10)	.630 (16)	.551 (14)
55215-8-3/8	5/16 (8)	3/8	.319 (8,1)	1.732 (44)	.898 (22,8)	.394 (10)	.787 (20)	.551 (14)
55215-10-1/4	10	1/4	.280 (7,1)	2.087 (53)	1.051 (26,7)	.512 (13)	.630 (16)	.669 (17)
55215-10-3/8	10	3/8	.319 (8,1)	2.087 (53)	1.031 (26,2)	.512 (13)	.787 (20)	.669 (17)
55215-10-1/2	10	1/2	.378 (9,6)	2.087 (53)	1.091 (27,7)	.512 (13)	.984 (25)	.669 (17)
55215-12-1/4	12	1/4	.280 (7,1)	2.421 (61,5)	1.106 (28,1)	.630 (16)	.630 (16)	.787 (20)
55215-12-3/8	12	3/8	.319 (8,1)	2.421 (61,5)	1.087 (27,6)	.630 (16)	.787 (20)	.787 (20)
55215-12-1/2	12	1/2	.378 (9,6)	2.421 (61,5)	1.146 (29,1)	.630 (16)	.984 (25)	.787 (20)
55215-14-3/8	14	3/8	.319 (8,1)	2.402 (61)	1.252 (31,8)	.709 (18)	.787 (20)	.827 (21)
55215-14-1/2	14	1/2	.378 (9,6)	2.402 (61)	1.173 (29,8)	.709 (18)	.984 (25)	.827 (21)
55215-16-3/8	16	3/8	.319 (8,1)	2.578 (65,5)	1.330 (33,8)	.787 (20)	.866 (22)	.948 (24)
55215-16-1/2	16	1/2	.378 (9,6)	2.578 (65,5)	1.410 (35,8)	.787 (20)	.984 (25)	.948 (24)

55225

SWIVEL RUN TEE

BSPP

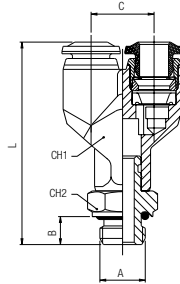


Part No.	Tube	A	B	L1	L2	CH1	CH2	D
55225-4-M5	5/32 (4)	M5	.142 (3,6)	16,5	15,5	7	.354 (9)	10
55225-4-1/8	5/32 (4)	1/8	.217 (5,5)	.650 (16,5)	.717 (18,2)	.276 (7)	.512 (13)	.394 (10)
55225-4-1/4	5/32 (4)	1/4	.276 (7)	.650 (16,5)	.776 (19,7)	.276 (7)	.591 (15)	.394 (10)
55225-5-M5	5	M5	.142 (3,6)	.787 (20)	.571 (14,5)	.354 (9)	.354 (9)	.472 (12)
55225-5-1/8	5	1/8	.217 (5,5)	.787 (20)	.685 (17,4)	.354 (9)	.512 (13)	.472 (12)
55225-6-M5	6	M5	.142 (3,6)	.807 (20,5)	.571 (14,5)	.354 (9)	.354 (9)	.492 (12,5)
55225-6-1/8	6	1/8	.217 (5,5)	.807 (20,5)	.685 (17,4)	.354 (9)	.512 (13)	.492 (12,5)
55225-6-1/4	6	1/4	.276 (7)	.807 (20,5)	.744 (18,9)	.354 (9)	.591 (15)	.492 (12,5)
55225-8-1/8	5/16 (8)	1/8	.217 (5,5)	.866 (22)	.744 (18,9)	.394 (10)	.512 (13)	.551 (14)
55225-8-1/4	5/16 (8)	1/4	.276 (7)	.866 (22)	.803 (20,4)	.394 (10)	.591 (15)	.551 (14)
55225-8-3/8	5/16 (8)	3/8	.295 (7,5)	.866 (22)	.823 (20,9)	.394 (10)	.669 (17)	.551 (14)
55225-10-1/4	10	1/4	.276 (7)	1.043 (26,5)	.858 (21,8)	.512 (13)	.630 (16)	.669 (17)
55225-10-3/8	10	3/8	.295 (7,5)	1.043 (26,5)	.858 (21,8)	.512 (13)	.669 (17)	.669 (17)
55225-10-1/2	10	1/2	.354 (9)	1.043 (26,5)	.957 (24,3)	.512 (13)	.827 (21)	.669 (17)
55225-12-1/4	12	1/4	.276 (7)	1.220 (31)	.909 (23,1)	.630 (16)	.630 (16)	.787 (20)
55225-12-3/8	12	3/8	.296 (7,5)	1.220 (31)	.909 (23,1)	.630 (16)	.669 (17)	.787 (20)
55225-12-1/2	12	1/2	.354 (9)	1.220 (31)	1.008 (25,6)	.630 (16)	.827 (21)	.787 (20)
55225-14-3/8	14	3/8	.295 (7,5)	1.201 (30,5)	1.043 (26,5)	.709 (18)	.787 (20)	.827 (21)
55225-14-1/2	14	1/2	.354 (9)	1.201 (30,5)	1.063 (27)	.709 (18)	.827 (21)	.827 (21)

55325

UNION Y

BSPP

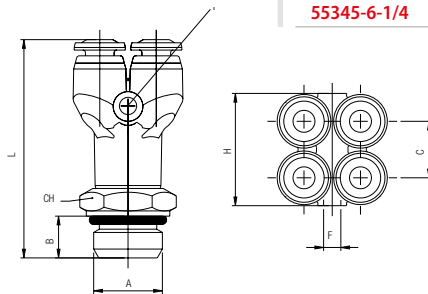


Part No.	Tube	A	B	C	L	CH1	CH2
55325-4-M5	5/32 (4)	M5	.157 (4)	.433 (11)	1.437 (36,5)	.394 (10)	.394 (10)
55325-4-1/8	5/32 (4)	1/8	.236 (6)	.433 (11)	1.516 (38,5)	.394 (10)	.512 (13)
55325-4-1/4	5/32 (4)	1/4	.315 (8)	.433 (11)	1.594 (40,5)	.394 (10)	.630 (16)
55325-6-M5	6	M5	.157 (4)	.531 (13,5)	1.634 (41,5)	.472 (12)	.394 (10)
55325-6-1/8	6	1/8	.236 (6)	.531 (13,5)	1.713 (43,5)	.472 (12)	.512 (13)
55325-6-1/4	6	1/4	.315 (8)	.531 (13,5)	1.831 (46,5)	.472 (12)	.630 (16)
55325-8-1/8	5/16 (8)	1/8	.236 (6)	.610 (15,5)	1.850 (47)	.551 (14)	.512 (13)
55325-8-1/4	5/16 (8)	1/4	.315 (8)	.610 (15,5)	1.969 (50)	.551 (14)	.630 (16)
55325-8-3/8	5/16 (8)	3/8	.354 (9)	.610 (15,5)	2.047 (52)	.551 (14)	.787 (20)
55325-10-1/4	10	1/4	.315 (8)	.748 (19)	2.343 (59,5)	.669 (17)	.630 (16)
55325-10-3/8	10	3/8	.354 (9)	.748 (19)	2.343 (59,5)	.669 (17)	.787 (20)
55325-10-1/2	10	1/2	.394 (10)	.748 (19)	2.441 (62)	.669 (17)	.945 (24)
55325-12-3/8	12	3/8	.354 (9)	.866 (22)	2.697 (68,5)	.787 (20)	.787 (20)
55325-12-1/2	12	1/2	.394 (10)	.866 (22)	2.795 (71)	.787 (20)	.945 (24)

55345

4 POSITION Y

BSPP

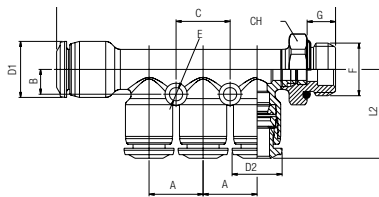


Part No.	Tube	A	B	C	L	H	CH	F
55345-4-1/8	5/32 (4)	1/8	.236 (6)	.425 (10,8)	1.575 (40)	.846 (21,5)	.512 (13)	.130 (3,3)
55345-4-1/4	5/32 (4)	1/4	.315 (8)	.425 (10,8)	1.654 (42)	.846 (21,5)	.630 (16)	.130 (3,3)
55345-6-1/8	6	1/8	.236 (6)	.524 (13,3)	1.850 (47)	1.055 (26,8)	.512 (13)	.130 (3,3)
55345-6-1/4	6	1/4	.315 (8)	.524 (13,3)	1.929 (49)	1.055 (26,8)	.630 (16)	.130 (3,3)

55365

REDUCTION MANIFOLD

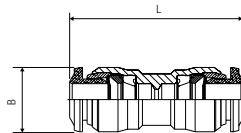
BSPP



Part No.	Tube	F	A	B	L1	L2	C	E	G	H	D1	D2
55365-6-4-1/8	6-5/32(4)	1/8	.531 (13,5)	.236 (6)	2.783 (70,7)	.858 (21,8)	.531 (13,5)	.130 (3,3)	.213 (5,4)	.512 (13)	.551 (14)	.472 (12)
55365-6-4-1/4	6-5/32(4)	1/4	.531 (13,5)	.236 (6)	2.756 (70)	.858 (21,8)	.531 (13,5)	.130 (3,3)	.280 (7,1)	.630 (16)	.551 (14)	.472 (12)
55365-8-4-1/8	5/16(8)-5/32(4)	1/8	.531 (13,5)	.236 (6)	2.783 (70,7)	.858 (21,8)	.531 (13,5)	.130 (3,3)	.213 (5,4)	.512 (13)	.551 (14)	.472 (12)
55365-8-4-1/4	5/16(8)-5/32(4)	1/4	.531 (13,5)	.236 (6)	2.756 (70)	.858 (21,8)	.531 (13,5)	.130 (3,3)	.280 (7,1)	.630 (16)	.551 (14)	.472 (12)
55365-8-6-1/8	5/16(8)-6	1/8	.531 (13,5)	.236 (6)	2.783 (70,7)	.878 (22,3)	.531 (13,5)	.130 (3,3)	.213 (5,4)	.512 (13)	.551 (14)	.492 (12,5)
55365-8-6-1/4	5/16(8)-6	1/4	.531 (13,5)	.236 (6)	2.756 (70)	.878 (22,3)	.531 (13,5)	.130 (3,3)	.280 (7,1)	.630 (16)	.551 (14)	.492 (12,5)
55365-10-6-1/4	10-6	1/4	.591 (15)	.276 (7)	3.244 (82,4)	.933 (23,7)	.591 (15)	.130 (3,3)	.280 (7,1)	.630 (16)	.669 (17)	.551 (14)
55365-10-6-3/8	10-6	3/8	.591 (15)	.276 (7)	3.228 (82)	.933 (23,7)	.591 (15)	.130 (3,3)	.319 (8,1)	.787 (20)	.669 (17)	.551 (14)
55365-10-8-1/4	10-5/16(8)	1/4	.591 (15)	.276 (7)	3.244 (82,4)	.913 (23,2)	.591 (15)	.130 (3,3)	.280 (7,1)	.630 (16)	.669 (17)	.551 (14)
55365-10-8-3/8	10-5/16(8)	3/8	.591 (15)	.276 (7)	3.228 (82)	.913 (23,2)	.591 (15)	.130 (3,3)	.319 (8,1)	.787 (20)	.669 (17)	.551 (14)

55040

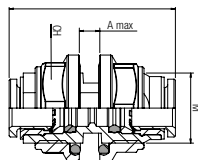
UNION



Part No.	Tube	Tube	L	B
55040-4	5/32 (4)		1.220 (31)	.394 (10)
55040-5	5		1.339 (34)	.472 (12)
55040-6	6		1.378 (35)	.492 (12,5)
55040-6-4	6	5/32 (4)	1.339 (34)	.492 (12,5)
55040-8	5/16 (8)		1.457 (37)	.551 (14)
55040-8-4	5/16 (8)	5/32 (4)	1.476 (37,5)	.551 (14)
55040-8-6	5/16 (8)	6	1.476 (37,5)	.551 (14)
55040-10	10		1.772 (45)	.669 (17)
55040-10-6	10	6	1.732 (44)	.669 (17)
55040-10-8	10	5/16 (8)	1.732 (44)	.669 (17)
55040-12	12		1.929 (49)	.787 (20)
55040-12-8	12	5/16 (8)	1.929 (49)	.787 (20)
55040-12-10	12	10	1.929 (49)	.787 (20)
55040-14	14		1.890 (48)	.827 (21)
55040-14-12	14	12	1.909 (48,5)	.827 (21)
55040-16-16	16	16	2.107 (53,5)	.945 (24)

55050

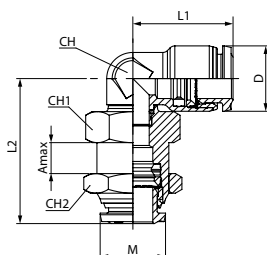
BULKHEAD UNION



Part No.	Tube	M	L	CH	A max
55050-8	5/16 (8)	M16x1	1.527 (38,8)	.708 (18)	.571 (14,5)

55060

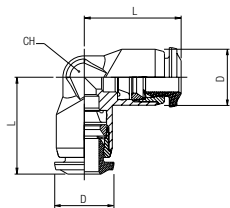
BULKHEAD ORIENTING ELBOW



Part No.	Tube	M	L1	L2	CH	CH1	CH2	A max	D
55060-4-M12x1	5/32 (4)	M12x1	.650 (16,5)	1.181 (30)	.276 (7)	.551 (14)	.669 (17)	.256 (6,5)	.394 (10)
55060-6-M14x1	6	M14x1	.807 (20,5)	1.220 (31)	.354 (9)	.630 (16)	.669 (17)	.256 (6,5)	.472 (12)
55060-8-M16x1	5/16 (8)	M16x1	.886 (22,5)	1.339 (34)	.394 (10)	.709 (18)	.748 (19)	.276 (7)	.551 (14)
55060-10-M20x1	10	M20x1	1.043 (26,5)	1.535 (39)	.512 (13)	.709 (18)	.945 (24)	.296 (7,5)	.669 (17)
55060-12-M22x1	12	M22x1	1.181 (30)	1.732 (44)	.630 (16)	.985 (25)	1.024 (26)	.394 (9,5)	.787 (20)

55130

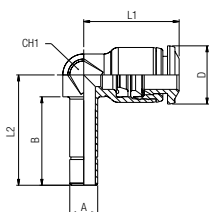
UNION ELBOW



Part No.	D1	D2	L	CH	D
55130-4	5/32 (4)		.650 (16,5)	.354 (9)	.394 (10)
55130-5	5		.787 (20)	.433 (11)	.472 (12)
55130-6	6		.807 (20,5)	.433 (11)	.472 (12)
55130-8-6	5/16 (8)	6	.886 (22,5)	.512 (13)	.551 (14)
55130-8	5/16 (8)		.866 (22)	.512 (13)	.551 (14)
55130-10-6	10	6	1.024 (26)	.630 (16)	.669 (17)
55130-10-8	10	5/16 (8)	1.024 (26)	.630 (16)	.669 (17)
55130-10	10		1.043 (26,5)	.630 (16)	.669 (17)
55130-12-10	12	10	1.201 (30,5)	.748 (19)	.787 (20)
55130-12	12		1.181 (30)	.748 (19)	.787 (20)
55130-14	14		1.201 (30,5)	.787 (20)	.827 (21)
55130-16	16		1.291 (32,8)	.945 (24)	.787 (20)

55140

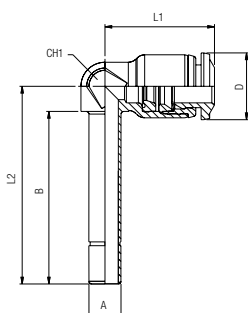
ELBOW PLUG IN



Part No.	Tube	A	B	L1	L2	CH1	D
55140-4	5/32 (4)	5/32 (4)	.669 (17)	.650 (16,5)	.819 (20,8)	.276 (7)	.394 (10)
55140-4-6	5/32 (4)	6	.748 (19)	.650 (16,5)	.898 (22,8)	.276 (7)	.394 (10)
55140-6	6	6	.748 (19)	.807 (20,5)	.933 (23,7)	.354 (9)	.492 (12,5)
55140-6-4	6	5/32 (4)	.669 (17)	.807 (20,5)	.854 (21,7)	.354 (9)	.492 (12,5)
55140-6-8	6	5/16 (8)	.787 (20)	.886 (22,5)	1.024 (26)	.394 (10)	.551 (14)
55140-8	5/16 (8)	5/16 (8)	.787 (20)	.866 (22)	1.024 (26)	.394 (10)	.551 (14)
55140-8-10	5/16 (8)	10	.858 (21,8)	.866 (22)	1.087 (27,6)	.394 (10)	.551 (14)
55140-10	10	10	.886 (22,5)	1.043 (26,5)	1.181 (30)	.512 (13)	.669 (17)
55140-10-12	10	12	.972 (24,7)	1.043 (26,5)	1.268 (32,2)	.512 (13)	.669 (17)
55140-12	12	12	1.004 (25,5)	1.181 (30)	1.319 (33,5)	.630 (16)	.787 (20)

55150

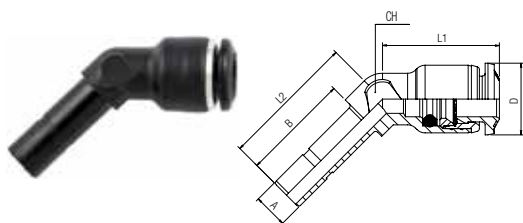
ELBOW PLUG IN



Part No.	Tube	A	B	L1	L2	CH1	D
55150-4	5/32 (4)	5/32 (4)	1.102 (28)	.650 (16,5)	1.252 (31,8)	.276 (7)	.394 (10)
55150-4-6	5/32 (4)	6	1.201 (30,5)	.650 (16,5)	1.350 (34,3)	.276 (7)	.394 (10)
55150-6	6	6	1.272 (32,3)	.807 (20,5)	1.457 (37)	.354 (9)	.492 (12,5)
55150-6-4	6	5/32 (4)	1.181 (30)	.807 (20,5)	1.366 (34,7)	.354 (9)	.492 (12,5)
55150-8	5/16 (8)	5/16 (8)	1.417 (36)	.866 (22)	1.654 (42)	.394 (10)	.551 (14)
55150-8-10	5/16 (8)	10	1.476 (37,5)	.866 (22)	1.697 (43,1)	.394 (10)	.551 (14)
55150-10	10	10	1.606 (40,8)	1.043 (26,5)	1.902 (48,3)	.512 (13)	.669 (17)
55150-10-12	10	12	1.701 (43,2)	1.043 (26,5)	1.996 (50,7)	.512 (13)	.669 (17)
55150-12	12	12	1.850 (47)	1.220 (31)	2.165 (55)	.630 (16)	.787 (20)

55160

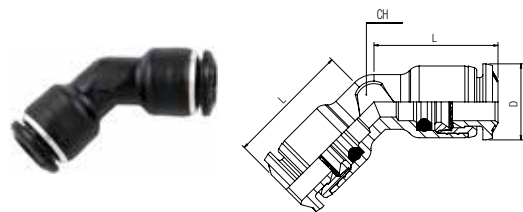
45° ELBOW PLUG IN



Part No.	Tube	A	B	L1	L2	CH1	D
55160-4	5/32 (4)	5/32 (4)	.669 (17)	.492 (12,5)	.827 (21)	.276 (7)	.394 (10)
55160-6	6	6	.748 (19)	.807 (20,5)	.925 (23,5)	.354 (9)	.472 (12)
55160-8	5/16 (8)	5/16 (8)	.787 (20)	.866 (22)	.984 (25)	.394 (10)	.551 (14)
55160-10	10	10	.886 (22,5)	1.043 (26,5)	1.181 (30)	.512 (13)	.669 (17)
55160-12	12	12	1.004 (25,5)	1.181 (30)	1.319 (33,5)	.630 (16)	.787 (20)

55180

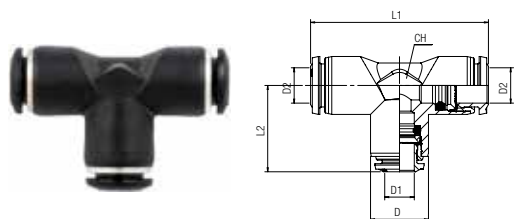
45° UNION ELBOW



Part No.	Tube	L	CH	D
55180-4	5/32 (4)	.650 (16,5)	.276 (7)	.394 (10)
55180-6	6	.807 (20,5)	.354 (9)	.472 (12)
55180-8	5/16 (8)	.866 (22)	.394 (10)	.551 (14)
55180-10	10	1.043 (26,5)	.512 (13)	.669 (17)
55180-12	12	1.181 (30)	.630 (16)	.787 (20)

55230

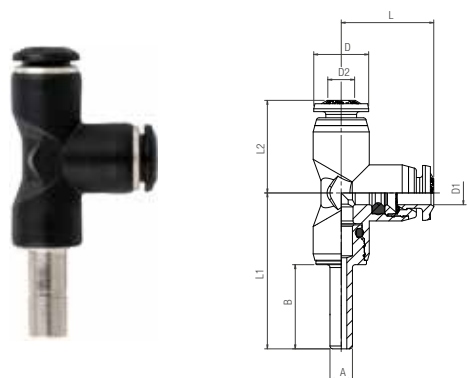
UNION TEE



Part No.	D1	D2	L1	L2	CH	D
55230-5	5	5	1.575 (40)	.787 (20)	.433 (11)	.472 (12)
55230-6-4	6	5/32(4)	1.575 (40)	.807 (20,5)	.433 (11)	.492 (12,5)
55230-6	6	6	1.614 (41)	.807 (20,5)	.433 (11)	.472 (12)
55230-6-8	6	5/16(8)	1.772 (45)	.886 (22,5)	.512 (13)	.551 (14)
55230-4	5/32(4)	5/32(4)	1.299 (33)	.650 (16,5)	.354 (9)	.394 (10)
55230-4-6	5/32(4)	6	1.614 (41)	.787 (20)	.433 (11)	.492 (12,5)
55230-4-8	5/32(4)	5/16(8)	1.772 (45)	.866 (22)	.512 (13)	.551 (14)
55230-8-6	5/16(8)	6	1.772 (45)	.886 (22,5)	.512 (13)	.551 (14)
55230-8	5/16(8)	5/16(8)	1.732 (44)	.866 (22)	.512 (13)	.551 (14)
55230-8-10	5/16(8)	10	2.087 (53)	1.024 (26)	.630 (16)	.669 (17)
55230-8-14	5/16(8)	14	2.421 (61,5)	1.161 (29,5)	.787 (20)	.827 (21)
55230-10-8	10	5/16(8)	2.047 (52)	1.043 (26,5)	.630 (16)	.669 (17)
55230-10	10	10	2.087 (53)	1.043 (26,5)	.630 (16)	.669 (17)
55230-10-12	10	12	2.421 (61,5)	1.181 (30)	.748 (19)	.787 (20)
55230-10-14	10	14	2.402 (61)	1.181 (30)	.787 (20)	.827 (21)
55230-12-10	12	10	2.343 (59,5)	1.201 (30,5)	.748 (19)	.787 (20)
55230-12	12	12	2.421 (61,5)	1.181 (30)	.748 (19)	.787 (20)
55230-12-14	12	14	2.402 (61)	1.201 (30,5)	.787 (20)	.827 (21)
55230-14	14	14	2.402 (61)	1.201 (30,5)	.787 (20)	.827 (21)
55230-16	16	16	2.579 (65,5)	1.290 (32,8)	.787 (20)	.945 (24)

55235

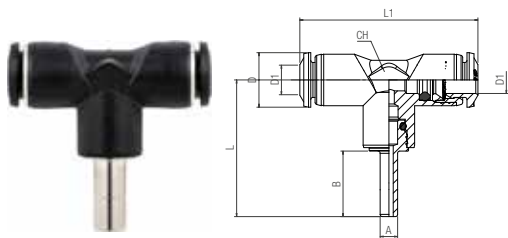
RUN TEE PLUG IN



Part No.	D1	D2	A	B	L	L1	L2	CH	D
55235-4-4-4	5/32(4)	5/32(4)	5/32(4)	.591 (15)	1.102 (28)	.650 (16,5)	.650 (16,5)	.354 (9)	.394 (10)
55235-6-6-6	6	6	6	.669 (17)	1.319 (33,5)	.807 (20,5)	.807 (20,5)	.433 (11)	.492 (12,5)
55235-8-8-8	5/16(8)	5/16(8)	5/16(8)	.709 (18)	1.437 (36,5)	.886 (22,5)	.886 (22,5)	.512 (13)	.551 (14)
55235-10-10-10	10	10	10	.866 (22)	1.732 (44)	1.043 (26,5)	1.043 (26,5)	.630 (16)	.669 (17)
55235-12-12-12	12	12	12	.965 (24,5)	1.220 (31)	1.969 (50)	1.22 (31)	.748 (19)	.787 (20)
55235-4-6-6	5/32(4)	6	6	.669 (17)	.787 (20)	1.319 (33,5)	.807 (20,5)	.433 (11)	.492 (12,5)
55235-6-8-8	6	5/16(8)	5/16(8)	.886 (22,5)	.886 (22,5)	1.437 (36,5)	.886 (22,5)	.512 (13)	.551 (14)
55235-8-10-10	5/16(8)	10	10	.866 (22)	1.024 (26)	1.732 (44)	1.043 (26,5)	.630 (16)	.669 (17)
55235-10-12-12	10	12	12	.965 (24,5)	1.181 (30)	1.969 (50)	1.22 (31)	.748 (19)	.787 (20)

55237

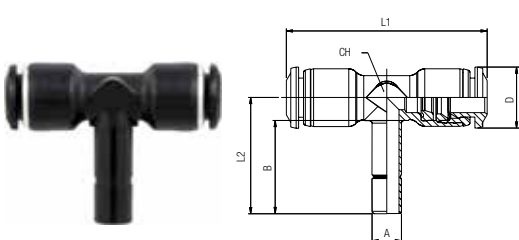
BRANCH TEE PLUG IN



Part No.	D1	A	B	L	L1	CH	D
55237-6-4	6	5/32 (4)	.591 (15)	1.240 (31,5)	1.614 (41)	.433 (11)	.492 (12,5)
55237-8-6	5/16 (8)	6	.669 (17)	1.398 (35,5)	1.772 (45)	.512 (13)	.551 (14)
55237-10-8	10	5/16 (8)	.709 (18)	1.575 (40)	2,087 (53)	.630 (16)	.669 (17)
55237-12-10	12	10	.866 (22)	1.870 (47,5)	2,402 (61)	.748 (19)	.787 (20)

55240

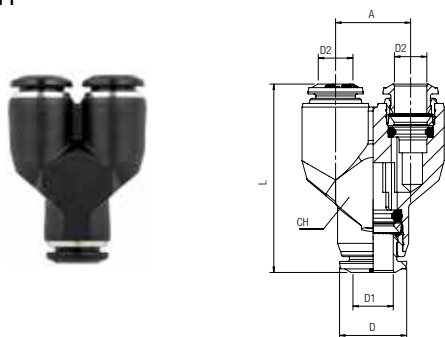
TEE PLUG IN



Part No.	Tube	A	B	L1	L2	CH	D
55240-4	5/32 (4)	5/32 (4)	.669 (17)	1.299 (33)	.815 (20,7)	.276 (7)	.394 (10)
55240-4-6	5/32 (4)	6	.748 (19)	1.299 (33)	.894 (22,7)	.276 (7)	.394 (10)
55240-6	6	6	.748 (19)	1.614 (41)	.933 (23,7)	.354 (9)	.492 (12,5)
55240-6-4	6	5/32 (4)	.669 (17)	1.614 (41)	.854 (21,7)	.354 (9)	.492 (12,5)
55240-8	5/16 (8)	5/16 (8)	.787 (20)	1.732 (44)	1.024 (26)	.394 (10)	.551 (14)
55240-8-10	5/16 (8)	10	.874 (22,2)	1.732 (44)	1.102 (28)	.394 (10)	.551 (14)
55240-10	10	10	.886 (22,5)	2.087 (53)	1.181 (30)	.512 (13)	.669 (17)
55240-10-12	10	12	.984 (25)	2.087 (53)	1.268 (32,2)	.512 (13)	.669 (17)
55240-12	12	12	1.004 (25,5)	2.421 (61,5)	1.319 (33,5)	.630 (16)	.787 (20)

55310

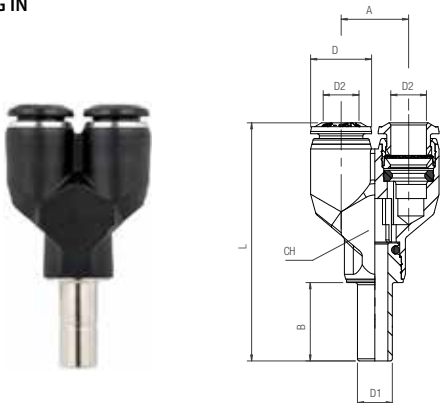
UNION Y



Part No.	D1	D2	A	L	CH	D
55310-4	5/32 (4)	5/32 (4)	.433 (11)	1.24 (31,5)	.394 (10)	.394 (10)
55310-6-4	6	5/32 (4)	.531 (13,5)	1.398 (35,5)	.472 (12)	.492 (12,5)
55310-6	6	6	.531 (13,5)	1.457 (37)	.472 (12)	.472 (12)
55310-8-6	5/16 (8)	6	.610 (15,5)	1.614 (41)	.551 (14)	.551 (14)
55310-8	5/16 (8)	5/16 (8)	.610 (15,5)	1.575 (40)	.551 (14)	.551 (14)
55310-10-8	10	5/16 (8)	.748 (19)	1.870 (47,5)	.669 (17)	.709 (18)
55310-10	10	10	.748 (19)	1.909 (48,5)	.669 (17)	.709 (18)
55310-12-8	12	5/16 (8)	.866 (22)	2.264 (57,5)	.787 (20)	.787 (20)
55310-12	12	12	.866 (22)	2.264 (57,5)	.787 (20)	.787 (20)

55315

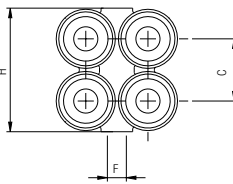
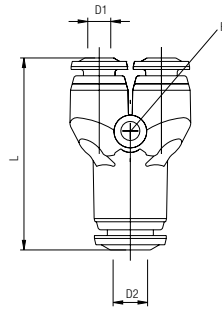
Y PLUG IN



Part No.	D1	D2	A	L	CH	B	D
55315-4	5/32 (4)	5/32 (4)	.433 (11)	1.693 (43)	.394 (10)	.591 (15)	.394 (10)
55315-6-4	6	5/32 (4)	.531 (13,5)	1.949 (49,5)	.472 (12)	.669 (17)	.492 (12,5)
55315-6	6	6	.531 (13,5)	1.969 (50)	.472 (12)	.669 (17)	.492 (12,5)
55315-8-6	5/16 (8)	6	.610 (15,5)	2.165 (55)	.551 (14)	.709 (18)	.492 (12,5)
55315-8	5/16 (8)	5/16 (8)	.610 (15,5)	2.165 (55)	.551 (14)	.709 (18)	.551 (14)
55315-10-8	10	5/16 (8)	.748 (19)	2.559 (65)	.669 (17)	.866 (22)	.669 (17)
55315-10	10	10	.748 (19)	2.579 (65,5)	.669 (17)	.866 (22)	.669 (17)
55315-12	12	12	.866 (22)	3.071 (78)	.787 (20)	.965 (24,5)	.787 (20)

55330

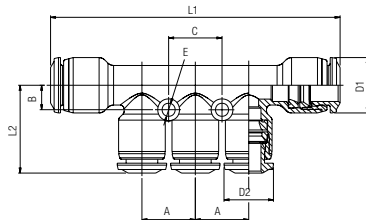
4 POSITION Y



Part No.	D1	D2	C	L	F	H
55330-4-4	5/32 (4)	5/32 (4)	.425 (10,8)	1.319 (33,5)	.130 (3,3)	.846 (21,5)
55330-4-6	5/32 (4)	6	.425 (10,8)	1.358 (34,5)	.130 (3,3)	.846 (21,5)
55330-6-6	6	6	.524 (13,3)	1.555 (39,5)	.130 (3,3)	1.055 (26,8)
55330-6-8	6	5/16 (8)	.524 (13,3)	1.575 (40)	.130 (3,3)	1.055 (26,8)

55350

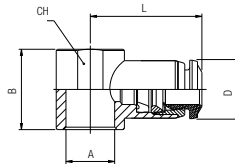
REDUCTION MANIFOLD



Part No.	Tube	A	B	L1	L2	C	E	D1	D2
55350-6-4	6 - 5/32(4)	.531 (13,5)	.236 (6)	2.913 (74)	.858 (21,8)	.531 (13,5)	.130 (3,3)	.551 (14)	.472 (12)
55350-8-4	5/16(8) - 5/32(4)	.531 (13,5)	.236 (6)	2.874 (73)	.858 (21,8)	.531 (13,5)	.130 (3,3)	.551 (14)	.472 (12)
55350-8-6	5/16(8) - 6	.531 (13,5)	.236 (6)	2.874 (73)	.878 (22,3)	.531 (13,5)	.130 (3,3)	.551 (14)	.492 (12,5)
55350-10-6	10 - 6	.591 (15)	.276 (7)	3.268 (83)	.933 (23,7)	.591 (15)	.130 (3,3)	.669 (17)	.551 (14)
55350-10-8	10 - 5/16(8)	.591 (15)	.276 (7)	3.268 (83)	.913 (23,2)	.591 (15)	.130 (3,3)	.669 (17)	.551 (14)

55500

SINGLE BANJO BODY

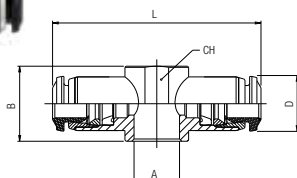


Part No.	Tube	A	B	L	CH	D
55500-4-M5	5/32 (4)	M5	.551 (14)	.768 (19,5)	.354 (9)	.394 (10)
55500-4-M6	5/32 (4)	M6	.551 (14)	.768 (19,5)	.354 (9)	.394 (10)
55500-4-1/8	5/32 (4)	1/8	.65 (16,5)	.846 (21,5)	.551 (14)	.394 (10)
55500-4-1/4	5/32 (4)	1/4	.728 (18,5)	.925 (23,5)	.708 (18)	.472 (12)
55500-5-M5	5	M5	.551 (14)	.807 (20,5)	.354 (9)	.472 (12)
55500-5-M6	5	M6	.551 (14)	.807 (20,5)	.354 (9)	.472 (12)
55500-5-1/8	5	1/8	.650 (16,5)	.886 (22,5)	.551 (14)	.472 (12)
55500-5-1/4	5	1/4	.728 (18,5)	.984 (25)	.709 (18)	.472 (12)
55500-6-M5	6	M5	.551 (14)	.827 (21)	.354 (9)	.472 (12)
55500-6-M6	6	M6	.551 (14)	.827 (21)	.354 (9)	.472 (12)
55500-6-1/8	6	1/8	.650 (16,5)	.906 (23)	.551 (14)	.472 (12)
55500-6-1/4	6	1/4	.728 (18,5)	1.004 (25,5)	.709 (18)	.472 (12)
55500-8-1/8	5/16 (8)	1/8	.650 (16,5)	.925 (23,5)	.551 (14)	.551 (14)
55500-8-1/4	5/16 (8)	1/4	.728 (18,5)	1.024 (26)	.709 (18)	.551 (14)
55500-8-3/8	5/16 (8)	3/8	.866 (22)	1.083 (27,5)	.827 (21)	.551 (14)
55500-10-1/4	10	1/4	.728 (18,5)	1.220 (31)	.708 (18)	.669 (17)
55500-10-3/8	10	3/8	.866 (22)	1.201 (30,5)	.827 (21)	.669 (17)
55500-12-3/8	12	3/8	.866 (22)	1.280 (32,5)	.827 (21)	.787 (20)
55500-12-1/2	12	1/2	1.024 (26)	1.378 (35)	1.024 (26)	.787 (20)

For BANJO STEM assemblies see 10.7/10.8/10.9

55510

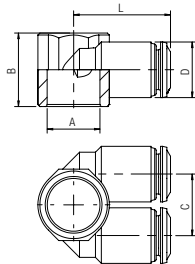
DOUBLE BANJO BODY



Part No.	Tube	A	B	L	CH	D
55510-4-M5	5/32 (4)	M5	.551 (14)	1.535 (39)	.354 (9)	.394 (10)
55510-4-1/8	5/32 (4)	1/8	.650 (16,5)	1.693 (43)	.551 (14)	.394 (10)
55510-5-1/8	5	1/8	.650 (16,5)	1.772 (45)	.551 (14)	.472 (12)
55510-5-1/4	5	1/4	.728 (18,5)	1.969 (50)	.709 (18)	.472 (12)
55510-6-1/8	6	1/8	.650 (16,5)	1.811 (46)	.551 (14)	.472 (12)
55510-6-1/4	6	1/4	.728 (18,5)	2.008 (51)	.709 (18)	.472 (12)
55510-8-1/8	5/16 (8)	1/8	.650 (16,5)	1.850 (47)	.551 (14)	.551 (14)
55510-8-1/4	5/16 (8)	1/4	.728 (18,5)	2.047 (52)	.709 (18)	.551 (14)

For BANJO STEM assemblies see 10.7/10.8/10.9

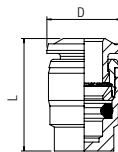
55520
DOUBLE BANJO BODY



Part No.	Tube	A	B	C	L	D
55520-4-1/8	5/32 (4)	1/8	.650 (16,5)	.512 (13)	.827 (21)	.472 (12)
55520-4-1/4	5/32 (4)	1/4	.728 (18,5)	.610 (15,5)	.945 (24)	.551 (14)
55520-6-1/8	6	1/8	.650 (16,5)	.512 (13)	.846 (21,5)	.472 (12)
55520-6-1/4	6	1/4	.728 (18,5)	.610 (15,5)	.965 (24,5)	.551 (14)
55520-6-3/8	6	3/8	.866 (22)	.531 (13,5)	.984 (25)	.472 (12)
55520-8-1/4	5/16 (8)	1/4	.728 (18,5)	.610 (15,5)	.965 (24,5)	.551 (14)
55520-8-3/8	5/16 (8)	3/8	.866 (22)	.748 (19)	1.102 (28)	.669 (17)
55520-10-3/8	10	3/8	.866 (22)	.748 (19)	1.102 (28)	.669 (17)

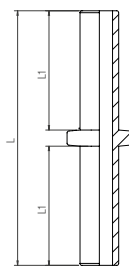
For BANJO STEM assemblies see 10.7/10.8/10.9

55620
TERMINAL PLUG



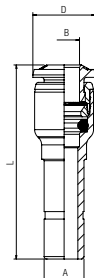
Part No.	Tube	D	L
55620-4	5/32 (4)	.393 (10)	.708 (18)
55620-6	6	.492 (12,5)	.787 (20)
55620-8	5/16 (8)	.551 (14)	.846 (21,5)
55620-10	10	.669 (17)	.984 (25)
55620-12	12	.787 (20)	1.082 (27,5)

55625
DOUBLE JOINT



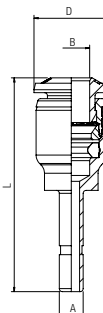
Part No.	Tube	L	L1
55625-4	5/32 (4)	1.358 (34,5)	.630 (16)
55625-6	6	1.555 (39,5)	.728 (18,5)
55625-8	5/16 (8)	1.654 (42)	.768 (19,5)
55625-10	10	2.028 (51,5)	.945 (24)
55625-12	12	2.362 (60)	1.102 (28)
55625-14	14	2.736 (69,5)	1.299 (33)

55700
TUBE REDUCER



Part No.	A	B	L	D
55700-6-4	6	5/32 (4)	1.339 (34)	.394 (10)
55700-8-4	5/16 (8)	5/32 (4)	1.496 (38)	.472 (12)
55700-8-6	5/16 (8)	6	1.535 (39)	.492 (12,5)
55700-10-6	10	6	1.673 (42,5)	.492 (12,5)
55700-10-8	10	5/16 (8)	1.654 (42)	.551 (14)
55700-12-6	12	6	1.516 (38,5)	.492 (12,5)
55700-12-8	12	5/16 (8)	1.634 (41,5)	.551 (14)
55700-12-10	12	10	1.909 (48,5)	.669 (17)
55700-14-8	14	5/16 (8)	1.476 (37,5)	.551 (14)
55700-14-10	14	10	1.969 (50)	.787 (20)
55700-14-12	14	12	1.969 (50)	.787 (20)

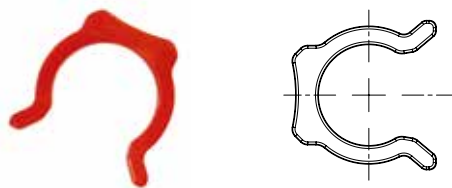
55705
TUBE EXPANDER



Part No.	A	B	L	D
55705-4-6	5/32 (4)	6	1.417 (36)	.472 (12)
55705-6-8	6	5/16 (8)	1.516 (38,5)	.551 (14)
55705-8-10	8	10	1.693 (43)	.669 (17)
55705-10-12	10	12	1.89 (48)	.787 (20)

50980

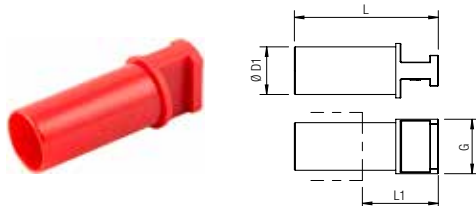
SECURITY CLIPS



Part No.	Tube
50980-53	5/32 (4)
50980-5	3/16 (5)
50980-04	1/4 (6)
50980-05	5/16 (8)
50980-06	3/8 (10)
50980-08	1/2 (12)
50980-14	(14)

50610

POLYAMIDE PLUG



Part No.	ØD1	G	L	L1
50610-3	3	.197 (5)	1.201 (30,5)	.709 (18)
50610-4	5/32 (4)	.236 (6)	1.162 (29,5)	.611 (15,5)
50610-5	5	.276 (7)	1.319 (33,5)	.709 (18)
50610-6	6	.315 (8)	1.260 (32)	.611 (15,5)
50610-8	5/16 (8)	.394 (10)	1.398 (35,5)	.768 (19,5)
50610-10	10	.472 (12)	1.575 (40)	.768 (19,5)
50610-12	12	.551 (14)	1.634 (41,5)	.787 (20)
50610-14	14	.630 (16)	1.654 (42)	.768 (19,5)
50610-16	16	.709 (18)	1.714 (42)	.768 (19,5)

50615

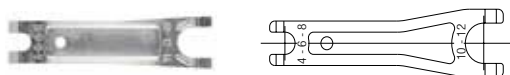
COLORED RELEASE BOTTON COVERS



Part No	Color					Tube
	BN	BL	GI	RO	VE	
50615-4	BN	BL	GI	RO	VE	4
50615-6	BN	BL	GI	RO	VE	6
50615-8	BN	BL	GI	RO	VE	8
50615-10	BN	BL	GI	RO	VE	10
50615-12	BN	BL	GI	RO	VE	12
50615-14	BN	BL	GI	RO	VE	14

50991

TOOL FOR DISASSEMBLING



Part No.
50991

50006

THREAD PACKING FOR THE SWIFTFIT TAPER THREADS



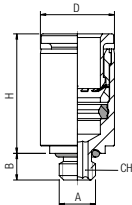
Part No.	Thread
50006-02	1/8
50006-04	1/4
50006-06	3/8
50006-08	1/2

56 SERIES - MINI

56010

STRAIGHT MALE WITH INTERNAL HEX

BSPP

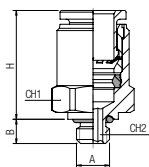


Part No.	Tube	A	B	H	CH	D
56010-4-M3	5/32 (4)	M3	.118 (3)	.591 (15)	.059 (1,5)	.315 (8)
56010-4-M5	5/32 (4)	M5	.142 (3,6)	.551 (14)	.098 (2,5)	.335 (8,5)
56010-4-M7	5/32 (4)	M7	.197 (5)	.551 (14)	.118 (3)	.394 (10)
56010-6-M5	6	M5	.142 (3,6)	.630 (16)	.098 (2,5)	.394 (10)
56010-6-M7	6	M7	.197 (5)	.630 (16)	.157 (4)	.394 (10)

56020

STRAIGHT MALE

BSPP

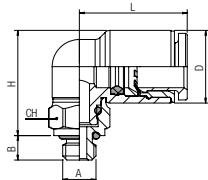


Part No.	Tube	A	B	H	CH1	CH2
56020-2-M3	2	M3	.118 (3)	.433 (11)	.236 (6)	.059 (1,5)
56020-2-M5	2	M5	.157 (4)	.354 (9)	.276 (7)	.059 (1,5)
56020-3-M3	3	M3	.118 (3)	.433 (11)	.236 (6)	.059 (1,5)
56020-3-M5	3	M5	.157 (4)	.394 (10)	.276 (7)	.079 (2)
56020-4-M3	5/32 (4)	M3	.118 (3)	.571 (14,5)	.315 (8)	-
56020-4-M5	5/32 (4)	M5	.142 (3,6)	.551 (14)	.354 (9)	.098 (2,5)
56020-4-M7	5/32 (4)	M7	.197 (5)	.551 (14)	.394 (10)	.118 (3)
56020-4-1/8	5/32 (4)	1/8	.197 (5)	.453 (11,5)	.512 (13)	.118 (3)
56020-6-M5	6	M5	.142 (3,6)	.630 (16)	.433 (11)	.098 (2,5)
56020-6-M7	6	M7	.197 (5)	.630 (16)	.394 (10)	.118 (3)
56020-6-1/8	6	1/8	.197 (5)	.531 (13,5)	.512 (13)	.157 (4)
56020-6-1/4	6	1/4	.280 (7,1)	.472 (12)	.630 (16)	.157 (4)

56115

SWIVEL ELBOW

BSPP

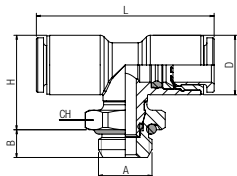


Part No.	Tube	A	B	H	L	D	CH
56115-2-M3	2	M3	.118 (3)	.512 (13)	.433 (11)	.256 (6,5)	.315 (8)
56115-2-M5	2	M5	.157 (4)	.492 (12,5)	.433 (11)	.256 (6,5)	.315 (8)
56115-3-M3	3	M3	.118 (3)	.512 (13)	.433 (11)	.256 (6,5)	.315 (8)
56115-3-M5	3	M5	.157 (4)	.492 (12,5)	.433 (11)	.256 (6,5)	.315 (8)
56115-4-M3	5/32 (4)	M3	.118 (3)	.394 (10)	.551 (14)	.335 (8,5)	.315 (8)
56115-4-M5	5/32 (4)	M5	.142 (3,6)	.531 (13,5)	.551 (14)	.335 (8,5)	.315 (8)
56115-4-1/8	5/32 (4)	1/8	.197 (5)	.512 (13)	.551 (14)	.335 (8,5)	.512 (13)
56115-4-1/4	5/32 (4)	1/4	.280 (7,1)	.512 (13)	.551 (14)	.335 (8,5)	.630 (16)
56115-6-M5	6	M5	.142 (3,6)	.610 (15,5)	.630 (16)	.413 (10,5)	.315 (8)
56115-6-M7	6	M7	.197 (5)	.623 (16)	.623 (16)	.413 (10,5)	.354 (9)
56115-6-1/8	6	1/8	.197 (5)	.591 (15)	.630 (16)	.413 (10,5)	.512 (13)
56115-6-1/4	6	1/4	.280 (7,1)	.591 (15)	.630 (16)	.413 (10,5)	.630 (16)

56215

SWIVEL BRANCH TEE

BSPP

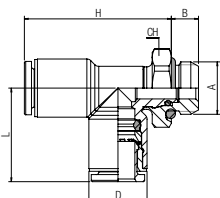


Part No.	Tube	A	B	H	L	CH	D
56215-2-M3	2	M3	.118 (3)	.512 (13)	.866 (22)	.315 (8)	.256 (6,5)
56215-2-M5	2	M5	.157 (4)	.492 (12,5)	.866 (22)	.315 (8)	.256 (6,5)
56215-3-M3	3	M3	.118 (3)	.512 (13)	.866 (22)	.315 (8)	.256 (6,5)
56215-3-M5	3	M5	.157 (4)	.492 (12,5)	.866 (22)	.315 (8)	.256 (6,5)

56225

SWIVEL RUN TEE

BSPP

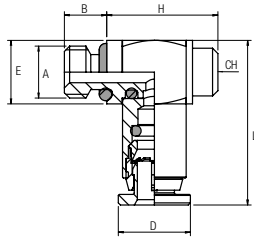


Part No.	Tube	A	B	H	L	CH	D
56225-2-M3	2	M3	.118 (3)	.827 (21)	.433 (11)	.315 (8)	.256 (6,5)
56225-2-M5	2	M5	.157 (4)	.827 (21)	.433 (11)	.315 (8)	.256 (6,5)
56225-3-M3	3	M3	.118 (3)	.827 (21)	.433 (11)	.315 (8)	.256 (6,5)
56225-3-M5	3	M5	.157 (4)	.827 (21)	.433 (11)	.315 (8)	.256 (6,5)

56550

SWIVEL SINGLE BANJO BODY

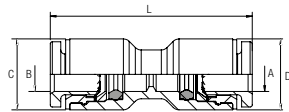
BSPP



Part No.	Tube	A	B	H	L	E	CH	D
56550-3-M3	3	M3	.118 (3)	.413 (10,5)	.610 (15,5)	.236 (6)	.079 (2)	.276 (7)
56550-3-M5	3	M5	.157 (4)	.413 (10,5)	.610 (15,5)	.236 (6)	.079 (2)	.276 (7)

56040

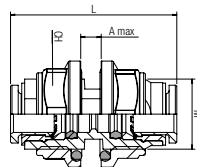
UNION



Part No.	A	B	C	L	D
56040-4-4	5/32 (4)	5/32 (4)	.335 (8,5)	.984 (25)	.335 (8,5)
56040-6-6	6	6	.413 (10,5)	1.102 (28)	.413 (10,5)
56040-8-6	5/16 (8)	6	.413 (10,5)	1.358 (34,5)	.551 (14)

56050

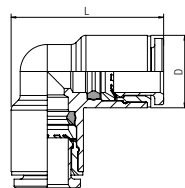
BULKHEAD UNION



Part No.	Tube	M	L	CH	A max
56050-4	5/32 (4)	M10x1	.984 (25)	.512 (13)	.217 (5,5)
56050-6	6	M12x1	1.102 (28)	.591 (15)	.335 (8,5)

56130

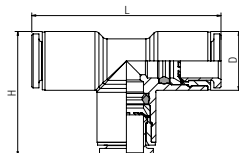
UNION ELBOW



Part No.	Tube	L	D
56130-2	2	.571 (14,5)	.256 (6,5)
56130-3	3	.571 (14,5)	.256 (6,5)
56130-4	5/32 (4)	.748 (19)	.335 (8,5)
56130-6	6	.886 (22,5)	.413 (10,5)

56230

UNION TEE



Part No.	Tube	H	L	D
56230-2	2	.571 (14,5)	.866 (22)	.256 (6,5)
56230-3	3	.571 (14,5)	.866 (22)	.256 (6,5)
56230-4	5/32 (4)	.748 (19)	1.142 (29)	.335 (8,5)
56230-6	6	.886 (22,5)	1.358 (34,5)	.413 (10,5)

